

# PRIME DAILY

August 14, 2025



## U.S. Markets Hit Records on Rate Cut Expectations

U.S. equities hit consecutive record highs as softer CPI data and Treasury Secretary Bessent's dovish outlook fuelled expectations for a September Fed rate cut. The S&P 500 and Nasdaq both reached new peaks.

Stocks initially extended Tuesday's rally but retreated during Wednesday's session while still closing higher. The Dow Jones led major indices with a 1% jump as investors priced in nearly a 100% probability of lower rates next month.

Healthcare and biotech outperformed, while technology stocks showed mixed results despite strong demand in the AI sector. Apple and Amazon gained on positive momentum and sector sentiment.

Bitcoin reached a record \$123,600 but was outpaced by Ethereum, which surged to a near four-year high above \$4,700. The crypto rally reflects legislative wins and new financial products, with altcoins like Cardano and Solana posting double-digit weekly gains.

Gold climbed to \$3,399/oz., advancing 1.5% as the July CPI print reinforced Fed rate cut expectations. Investors favour gold and precious metals over cash, anticipating falling rates and hedging against persistent inflation.

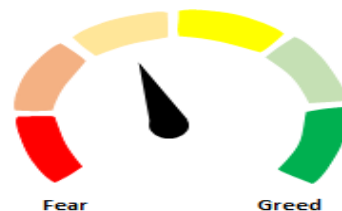
The dollar index fell for a second consecutive day to two-week lows as easing inflation and Bessent's dovish signals drove Treasury yields lower.

Oil prices edged up slightly ahead of the Trump-Putin summit but remained near multi-month lows due to oversupply concerns and rising U.S. inventories. Lithium jumped over 25% for the month following Chinese supply cuts and CATL's mine suspension. Natural gas declined but remains up nearly 29% year-over-year amid volatile demand and energy infrastructure threats.

The Nifty posted modest gains on Wednesday after data revealed India's consumer price inflation fell more than expected in July to an eight-year low, dropping below the RBI's tolerance band and increasing the likelihood of another rate cut.

The Nifty reclaimed its position above the 5 DEMA at 24568, closing up 131 points (0.54%) at 24619. Having established a strong base near 24340, the index is gradually gaining momentum and appears poised to test the next resistance level at 24820, aligned with the 50 DEMA. Support remains at yesterday's low of 24465.

**Indian markets are expected to open near Wednesday's close. Global market direction hinges on tomorrow's Alaska summit between U.S. and Russian leaders regarding Ukraine.**



Global Equity Indices			
	Close	Abs. Change	% Change
Indian Indices			
Sensex	80,540	304.3 ▲	0.38%
Nifty	24,619	131.9 ▲	0.54%
Midcap	56,682	356.7 ▲	0.63%
Small cap	17,614	115.9 ▲	0.66%
US Indices			
Dow Jones	44,922	463.7 ▲	1.04%
S&P 500	6,467	20.8 ▲	0.32%
Nasdaq	21,713	31.2 ▲	0.14%
European Indices			
FTSE	9,165	17.4 ▲	0.19%
DAX	24,186	160.8 ▲	0.67%
CAC	7,805	51.6 ▲	0.66%
Asian Indices			
Shanghai	3,695	28.6 ▲	0.78%
Hang Seng	25,671	700.9 ▲	2.81%
Nikkei	42,727	8.5 ▲	0.02%

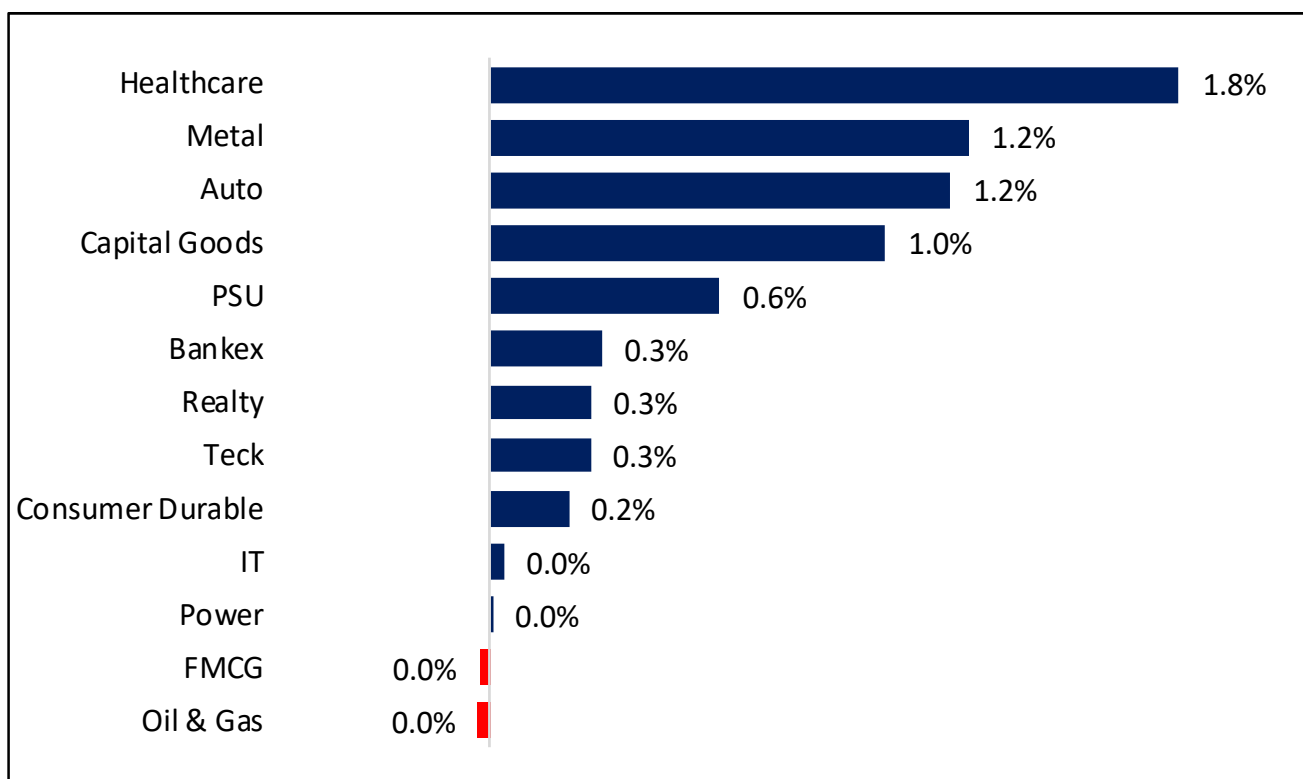
Indices Futures			
	Close	Abs. Change	% Change
IFSC Nifty			
IFSC Nifty	24,695	-15.5 ▼	-0.06%
US Indices			
Dow Jones	45,034	9.0 ▲	0.02%
S&P 500	6,486	-2.5 ▼	-0.04%
Nasdaq	23,941	-5.8 ▼	-0.02%
European Indices			
FTSE	9,181	15.0 ▲	0.16%
DAX	24,244	-3.0 ▼	-0.01%
Asian Indices			
Shanghai	4,198	33.6 ▲	0.81%
Hang Seng	25,685	54.0 ▲	0.21%
Nikkei	42,710	-660.0 ▼	-1.52%

## Nifty50 Index Contributors

Top Five (Positive Contributors)		
Stock	Points	% Change
HDFCBANK	17.5	0.07
APOLLOHOSP	12.8	0.05
HINDALCO	10.7	0.04
BHARTIARTL	10.3	0.04
ETERNAL	9.9	0.04

Bottom Five (Negative Contributors)		
Stock	Points	% Change
ITC	-4.6	-0.02
AXISBANK	-2.5	-0.01
ICICIBANK	-1.9	-0.01
TITAN	-1.8	-0.01
ADANIPORTS	-1.8	-0.01

## BSE Sectoral Leaders & Laggards

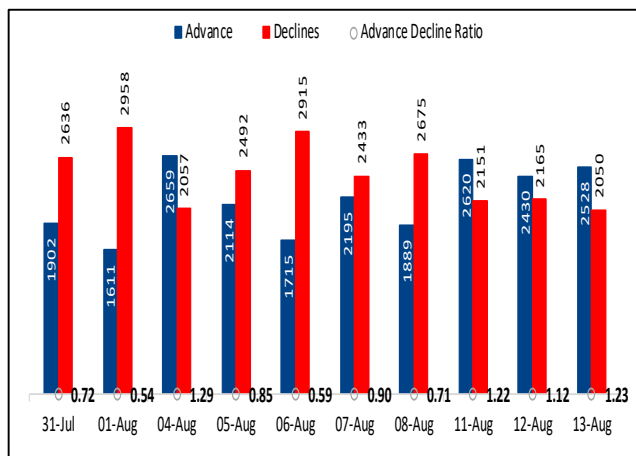


## Nifty50 Index Top Pops & Drops

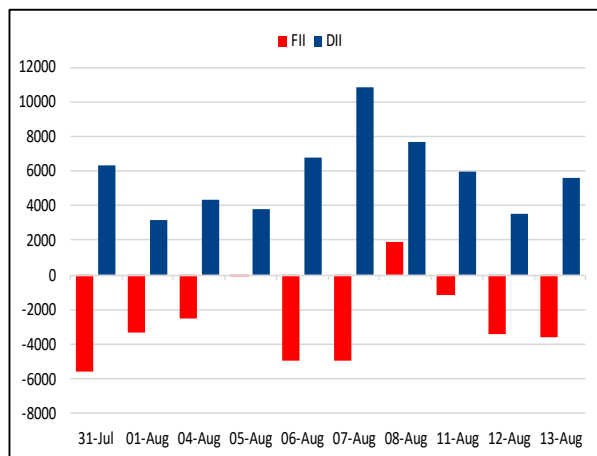
Nifty50 Top Five Gainers			
Symbol	LTP	% Change	Volume
APOLLOHOSP	7808.5	7.9	2,291,645
HINDALCO	700.5	5.01	13,151,356
DRREDDY	1253.4	2.71	1,192,506
HEROMOTOCO	4768.7	2.66	1,342,794
CIPLA	1561	2.59	1,859,765

Nifty50 Top Five Losers			
Symbol	LTP	% Change	Volume
INDUSINDBK	773.45	-1.23	4,114,205
ADANIPORTS	1319.6	-0.82	1,205,658
TITAN	3466.8	-0.57	360,474
ITC	414.1	-0.54	10,874,910
ULTRACEMCO	12401	-0.39	207,359

## BSE Advance & Declines



## Institutional Activities



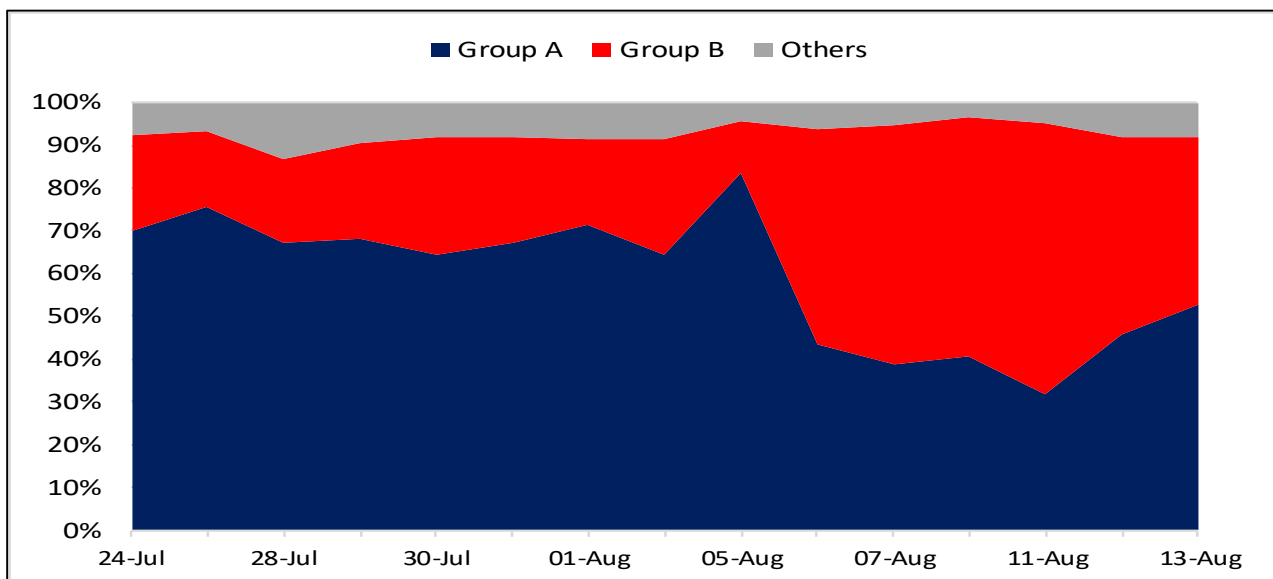
## 52 Week High Stocks

	13-Aug-25	12-Aug-25
BSE Universe	149	179
BSE Group A Stocks Hitting 52 Week High		
Stocks	Price	52 Week High
HBLENGINE	763.1	779
APOLLOHOSP	7808.45	7839.25
NAZARA	1414.65	1450
CHOICEIN	802.2	805.8
JMFINANCIL	186.95	189.9




## 52 Week Low Stocks

	13-Aug-25	12-Aug-25
BSE Universe	114	117
BSE Group A Stocks Hitting 52 Week Low		
Stocks	Price	52 Week Low
POLYMED	1,846.75	1,822.65
HFCL	71.62	71.41
COLPAL	2173.45	2158
PDSL	320.4	319
TEJASNET	551.05	543

## BSE Cash Market Turnover Participant-wise



## News Highly Sensitive to Stock Price

Impact	Stock	News
	<b>Brigade Enterprises</b>	Brigade Enterprises reported a 79% year-on-year jump in net profit at Rs 150 crore for the first quarter of this fiscal, up from Rs 83.7 crore in Q1FY25. Revenue increased 18.9% to Rs 1,281 crore against Rs 1,077 crore year-on-year. EBITDA for the April-July quarter rose 11% to Rs 323.9 crore compared to Rs 291.9 crore a year ago.
	<b>Muthoot Finance</b>	Muthoot Finance reported 90% rise in net profit at Rs 2,046 crore for Q1FY26, aided by higher loan demand as prices of the precious metal soared. Net interest income (NII) jumped 50.6%, coming at Rs 3,473 crore. NIMs increased to 12.15% from 11.51% last year. AUM stood at Rs 1.13 lakh crore, marking a 40% YoY growth.
	<b>Samvardhan Motherson</b>	The company reported a significant decline in net profit, which fell 48.5% YoY Rs 512 crore. Despite this drop in profitability, revenue grew 4.7% to Rs 30,212 crore, up from Rs 28,868 crore a year ago, reflecting moderate top-line expansion. EBITDA also contracted by 11.4%, coming in at Rs 2,458 crore. This led to a decline in margins, which stood at 8.1 percent down 150bps.

Stock	News
<b>Bharat Petroleum Corp Ltd (BPCL) Q1FY26 results: Highlights</b>	BPCL's revenue was above expectations, and net profit was below expectations in Q1FY26. The company's standalone revenue from operations fell about 0.5% to Rs 112,115 crore, and reported net profit at Rs 6,124 crore vs. Rs 3015 crore in Q1FY25. Operating margin improving to 8.6%, compared to 5% in Q1FY25. The Average Gross Refining Margin (GRM) of the Corporation for quarter ended 30th June 2025 is \$ 4.88 per barrel (April-June 2024: \$ 7.86 per barrel).
<b>Infosys</b>	Infosys has acquired a 75 percent stake in Versent Group, a wholly owned subsidiary of Telstra Group, to form a joint venture aimed at accelerating AI-led cloud and digital transformation for Australian enterprises. Telstra will retain the remaining 25 percent stake, while Infosys will have operational control of the Melbourne-headquartered firm. The deal is valued at AUD 233.25 million (over Rs 1,300 crore), including upfront and deferred consideration, excluding management incentives, and retention bonuses.
<b>Vodafone Idea (Vi)</b>	Vodafone Idea (Vi), staring at a possible cash crunch by the March 2026 quarter, is in early discussions with private credit funds including Davidson Kempner, Oaktree and Värde Partners to raise a small tranche of debt.
<b>HEG Limited</b>	HEG announces that its wholly owned subsidiary TACC Limited has signed a memorandum of agreement with the Central Road Research Institute to develop graphene enhanced pavements in India.
<b>PNC Infra</b>	Standalone revenue stood at Rs 1,136.5 crore declining 34.9% YoY from Rs. 1,744.4 for Q1FY25. EBITDA was down by 24% YoY to Rs 140.5 crore and EBITDA margin stood at 12.4% in Q1FY26 vs. 34% in Q1FY25. Net profit stood at Rs 80.7 crore in Q1FY26 vs. Rs 421.1 crore in Q1FY25 (-81% YoY).
<b>HG Infra</b>	Standalone revenue stood at Rs 1,709.2 crore growing by 13.5% YoY. EBITDA was down by 3% YoY to Rs 235.7 crore and EBITDA margin stood at 13.8% in Q1FY26 vs. 16.1% in Q1FY25. Net profit stood at Rs 125.4 crore in Q1FY26 vs. Rs 139.5 crore in Q1FY25 (-10% YoY).
<b>Surya Roshni</b>	Net profit of Surya Roshni declined 63.62% to Rs 33.63 crore in the quarter ended June 2025 as against Rs 92.45 crore during the previous quarter ended June 2024. Sales declined 15.25% to Rs 1604.52 crore in the quarter ended June 2025 as against Rs 1893.19 crore during the previous quarter ended June 2024

Stock	News
<b>Aditya Birla Fashion</b>	Aditya Birla Fashion and Retail Limited (ABFRL) said the company and its wholly-owned subsidiary, Aditya Birla Digital Fashion Ventures Limited (ABDFVL), have signed a shareholders' agreement (SHA) and a share subscription agreement (SSA) with ServiceNow Ventures Holdings, Inc for an investment of up to Rs 437 crore in ABDFVL.
<b>Endurance Technologies</b>	Endurance Technologies announced its Q1 results with an 11% increase in net profit to Rs 226 crore, driven by higher revenue. Revenue from operations surged 17.5% to Rs 3,319 crore compared to the same period last year. The company's EBITDA also saw an 18.8% increase, reaching Rs 444 crore. The EBITDA margin remained steady at 13.4%.
<b>RVNL</b>	RVNL received a Letter of Acceptance (LOA) from Southern Railway for the provision of a Video Surveillance System (VSS) at 441 D and E category stations, along with augmentation at 43 stations in categories A1, A, B, and C. The contract, valued at Rs 90,65 crore, will be executed over a period of 18 months
<b>Brigade Hotel</b>	Brigade Hotel Ventures Limited (BHVL) announced a multi-deal agreement with Marriott International, Inc. to develop six new hotels across four key markets in Southern India. This expansion will add approximately 940 rooms to BHVL's portfolio and feature properties under five distinct Marriott Bonvoy brands.
<b>Devyani International</b>	Devyani International's net profit for the June quarter declined nearly 90% from the same quarter last year. EBITDA declined by 4.6% from last year to Rs 206 crore, while margin narrowed by 250 basis points year-on-year to 15.2% from 17.7%. Revenue for the quarter increased by 11% from the year-ago period to Rs 1,357 crore from Rs 1,222 crore.



## Key Events

### U.S. Crude Oil Inventories Unexpectedly Rise By 3.0 Million Barrels

Crude oil inventories in the U.S. unexpectedly increased by the week ended August 8th, according to a report released by the Energy Information Administration on Wednesday. The EIA said crude oil inventories rose by 3.0 million last week after falling by 3.0 million barrels in the previous week. Economists had expected crude oil inventories to dip by 0.8 million barrels.

### U.S. Small Business Confidence Improves In July - NFIB

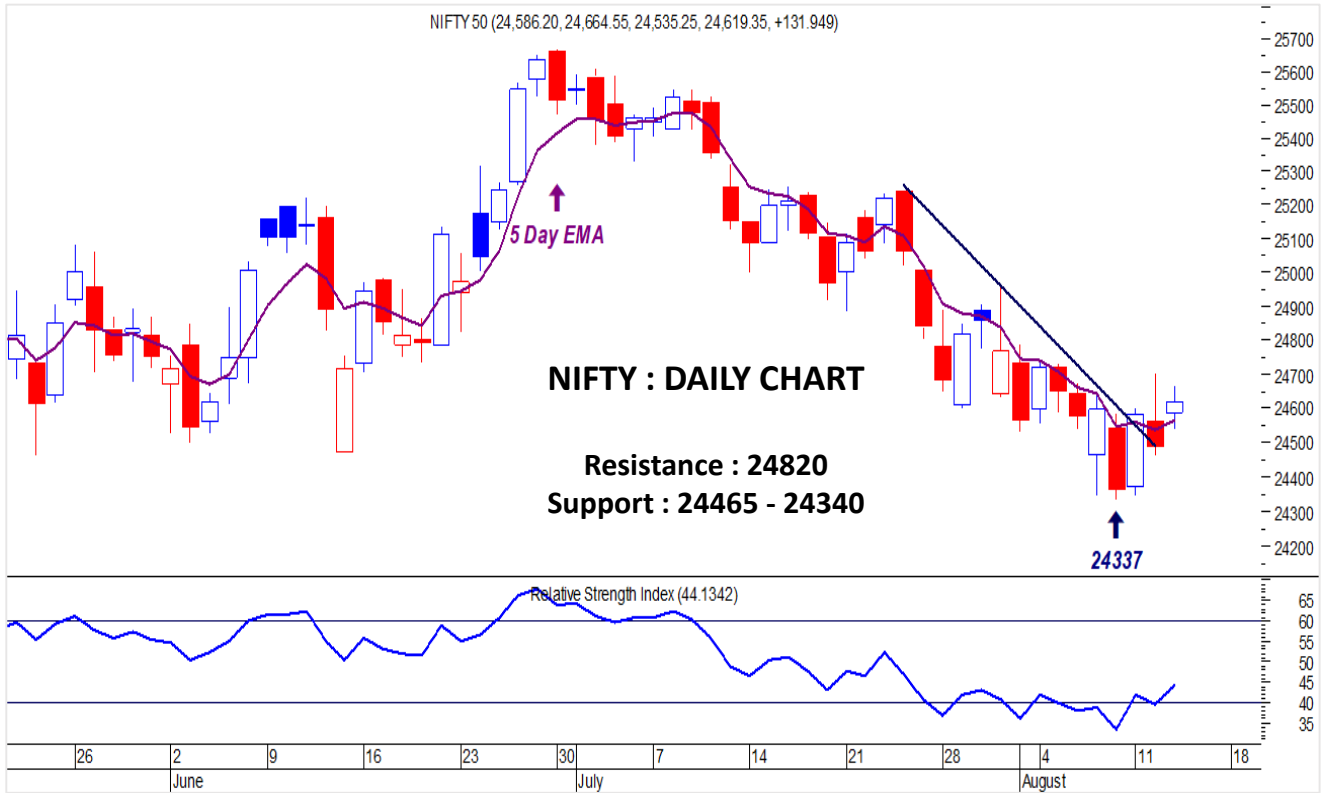
Small business optimism in the U.S. strengthened in July after eroding in the previous month as business expectations turned positive despite a rise in uncertainty, results of a monthly survey by the National Federation of Independent Businesses showed. The NFIB Small Business Optimism Index rose 1.7 points to 100.3 from 98.6 in June. The reading was slightly above the 52-year average of 98, the trade body said.

### China Bank Lending Declines In July

China's new yuan loans declined in July for the first time in 20 years, reports said citing data from the People's Bank of China on Wednesday. New yuan loans declined CNY 50 billion in July, while economists expected lending to fall to CNY 300 billion from CNY 2.24 trillion in June. Earlier this week, the Ministry of Finance unveiled an interest subsidy policy on loans for both households and businesses.



## NIFTY : Closed above 5 Day EMA, Oscillators are in Favour of Bulls.



## NIFTY AUTO INDEX: Up Trend is Intact, Sustaining above 21 Day EMA.



## Chart With Interesting Observations

### S&P 500 Companies EPS Growth Beat the Estimates

- Analysis of the Q2 earnings season for the S&P 500 reveals a significant outperformance of consensus expectations. While a "bottom-up" consensus of analyst estimates at the beginning of the quarter anticipated a year-over-year (YoY) Earnings Per Share (EPS) growth of approximately 4%, the actual results, with most companies having reported, indicate a much stronger growth rate of around 11%. This substantial positive earnings surprise is a result of favorable contributions from both revenue growth and profit margin expansion across the index.
- The S&P 500 has demonstrated robust top-line growth, with a year-over-year revenue increase of approximately 6%. This marks the highest revenue growth since Q3 2022.
- The blended net profit margin for the S&P 500 for Q2 is approximately 12.3%, which is higher than the year-ago margin of 12.2% and above the 5-year average of 11.8%.

#### S&P 500 YoY EPS Growth Actual vs Expected



## F&O Highlights

### SHORT COVERING WAS SEEN IN NIFTY FUTURES

#### Create longs with the SL of 24550 levels.

- After experiencing profit booking yesterday, the Nifty recovered most of its losses today, gaining 131 points (0.54%) to close at 24619. The index reclaimed its position above the 5-day exponential moving average (DEMA), which is now at 24568, and support has shifted up to 24465.
- Short Covering was seen in the Nifty Futures where Open Interest fell by 0.21% with Nifty rising by 0.54%.
- Long Build-Up was seen in the Bank Nifty Futures where Open Interest rose by 1.68% with Bank Nifty rising by 0.25%.
- Nifty Open Interest Put Call ratio rose to 1.08 levels from 0.78 levels.
- Amongst the Nifty options (14-Aug Expiry), Call writing is seen at 24700-24800 levels, indicating Nifty is likely to find strong resistance in the vicinity of 24700-24800 levels. On the lower side, an immediate support is placed in the vicinity of 24600-24500 levels where we have seen Put writing.
- Long build-up was seen by FII's in the Index Futures segment where they net bought worth 461 cr with their Open Interest going up by 769 contracts.

Index	Expected Trend	Prev. Close	Buy/Sell	Stop Loss	Target
NIFTY FUT	UP	24712.20	<b>BUY AROUND 24650</b>	<b>24550</b>	<b>24800</b>
BANK NIFTY FUT	UP	55433.20	<b>BUY AROUND 55350</b>	<b>55150</b>	<b>55600</b>

Nifty50 Snapshot			
	13-Aug-25	12-Aug-25	% Chg.
Nifty Spot	24619.35	24487.40	0.54
Nifty Futures	24712.20	24554.90	0.64
Premium/ (Discount)	92.85	67.50	N.A.
Open Interest (OI)	1.83	1.83	-0.21
Nifty PCR	1.08	0.78	37.86

Bank Nifty Snapshot			
	13-Aug-25	12-Aug-25	% Chg.
Bank Nifty Spot	55181.45	55043.70	0.25
Bank Nifty Futures	55433.20	55287.40	0.26
Premium/ (Discount)	251.75	243.70	N.A.
Open Interest (OI)	0.32	0.31	1.68
Bank Nifty PCR	0.75	0.76	-0.82

Nifty Options Highest OI (Weekly)			
CALL		PUT	
Strike Price	Open Interest (Contracts)	Strike Price	Open Interest (Contracts)
25000	211412	24600	204194

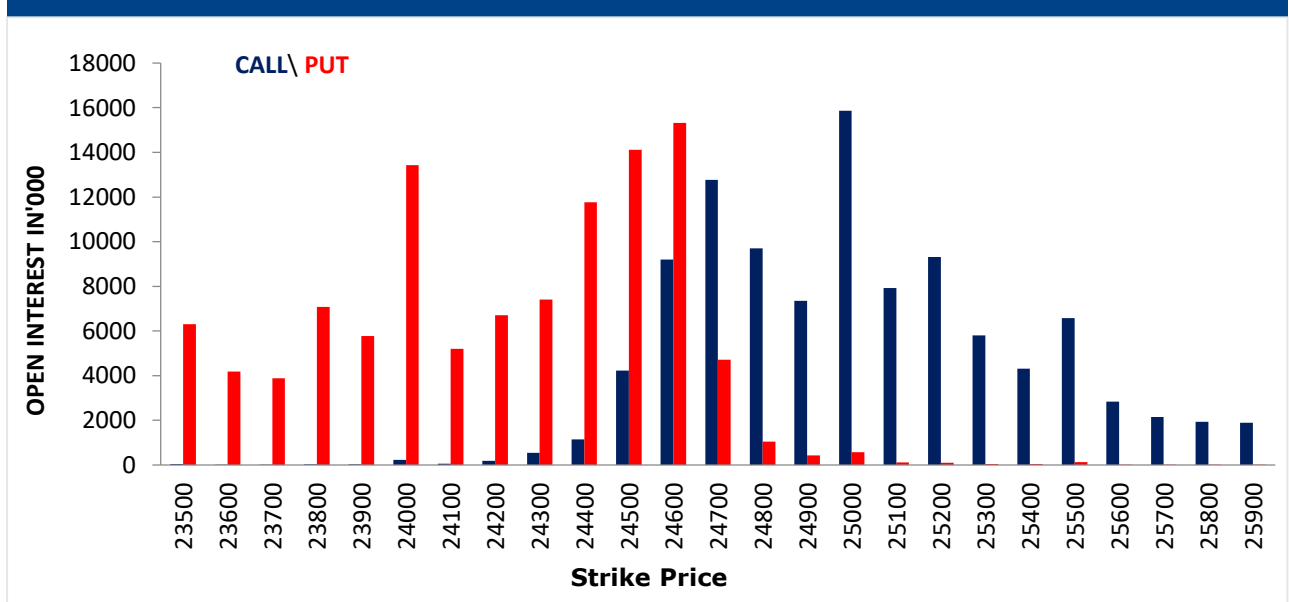
### FII Activity On 13 Aug 2025

	BUY		SELL		NET	OPEN INTEREST	
	Contracts	Value (Rs Cr)	Contracts	Value (Rs Cr)	(Rs Cr)	Contracts	Value (Rs Cr)
<b>Index Futures</b>	<b>11136</b>	<b>2075</b>	<b>8635</b>	<b>1614</b>	<b>461</b>	<b>221067</b>	<b>41162</b>
Nifty Futures	7782	1442	4760	882	560	155026	28735
Bank Nifty Fut.	2234	434	2649	514	-80	42024	8154
<b>Index Options</b>	<b>5964276</b>	<b>1102473</b>	<b>5990383</b>	<b>1107718</b>	<b>-5245</b>	<b>1784409</b>	<b>330659</b>
Nifty Options	5834734	1077815	5859322	1082782	-4967	1585828	292815
Bank Nifty Opt.	93888	18352	94435	18469	-117	171096	33045
<b>Stock Futures</b>	<b>313809</b>	<b>22715</b>	<b>281794</b>	<b>20123</b>	<b>2592</b>	<b>5572105</b>	<b>379140</b>
<b>Stock Options</b>	<b>286365</b>	<b>20667</b>	<b>275586</b>	<b>19989</b>	<b>678</b>	<b>341878</b>	<b>23220</b>

### FII's Open Interest (Contracts)

Date	Index Futures	Nifty Futures	Bank nifty Futures	Index Options	Nifty Options	Bank Nifty Options	Stock Futures	Stock Options
13-Aug-25	221067	155026	42024	1784409	1585828	171096	5572105	341878
12-Aug-25	220298	155650	41381	1573028	1378108	166928	5527474	315325
<b>Net Contracts</b>	<b>769</b>	<b>-624</b>	<b>643</b>	<b>211381</b>	<b>207720</b>	<b>4168</b>	<b>44631</b>	<b>26553</b>

### Nifty Weekly (14 – Aug) Option Open Interest Distribution



Top Gainers OI Wise		
Company	Future OI (%)	Price (%)
NUVAMA	20	1
APOLLOHOSP	19	8
SUZLON	18	-4
LICI	14	-3
NYKAA	12	5

Top Losers OI Wise		
Company	Future OI (%)	Price (%)
PAYTM	-9	3
ASTRAL	-8	2
SJVN	-8	-5
BSE	-7	5
JSL	-6	1

Top Gainers Price Wise		
Company	Future OI (%)	Price (%)
APOLLOHOSP	19	8
BDL	1	7
BSE	-7	5
NYKAA	12	5
HINDALCO	4	5

Top Losers Price Wise		
Company	Future OI (%)	Price (%)
PGEL	-3	-6
SJVN	-8	-5
SUZLON	18	-4
OIL	11	-4
LICI	14	-3

Long Buildup		
Company	Future OI (%)	Price (%)
NUVAMA	20	1
APOLLOHOSP	19	8
NYKAA	12	5
TVSMOTOR	10	2
ALKEM	9	5

Short Buildup		
Company	Future OI (%)	Price (%)
SUZLON	18	-4
LICI	14	-3
MUTHOOTFIN	12	-1
OIL	11	-4
WIPRO	7	0

Long Unwinding		
Company	Future OI (%)	Price (%)
SJVN	-8	-5
INDIANB	-5	0
PGEL	-3	-6
PAGEIND	-1	-1
PIIND	-1	-2

Short Covering		
Company	Future OI (%)	Price (%)
PAYTM	-9	3
ASTRAL	-8	2
BSE	-7	5
JSL	-6	1
TITAGARH	-6	2

Securities In Ban For Trade – 14.08.2025	
No.	Company Name
1.	PGEL
2.	PNBHOUSING
3.	RBLBANK
4.	TITAGARH

## Economic Calendar

Thursday	Friday	Monday	Tuesday	Wednesday
14 Aug	15 Aug	18 Aug	19 Aug	20 Aug
UK: GDP, IIP, Mfg. Production, Trade Balance India: WPI EU: GDP, IIP US: Initial & Conti. Jobless Claims	<b>India : Holiday</b> Japan: GDP, IIP China: Retail Sales, IIP US: Retail Sales, Empire Mfg., IIP, Mfg. Production, Uni. Of Mich. Sentiment	UK: Rightmove House Price EU: Trade Balance US: NAHB Housing Market Index India: Unemployment Rate	EU: ECB Current Account US: Housing starts, Building permits	Japan: Trade Balance China: 1&5 Yr. LPR UK, EU: CPI US: MBA Mortgage Application, FOMC Meeting Minutes India: Eight Core Infra

## Result Calendar – BSE 500

Thursday
14 Aug.
<ul style="list-style-type: none"> <li>• ALKYLAMINE</li> <li>• ARE&amp;M</li> <li>• ASHOKLEY</li> <li>• ASTRAZEN</li> <li>• EASEMYTRIP</li> <li>• GLENMARK</li> <li>• HINDCOPPER</li> <li>• INOXWIND</li> <li>• IOC</li> <li>• IRB</li> <li>• PATANJALI</li> <li>• SWANENERGY</li> <li>• VINATIORGA</li> </ul>

## QUARTERLY RESULTS ANNOUNCED

### AFTER MARKET HOURS

COMPANY	Q1FY26		YOY (%)		QOQ (%)		REMARK
	SALES (RS CR)	NP (RS CR)	SALES	NP	SALES	NP	
<b>Bharat Petroleum</b>	112514.7	6123.9	-0.5	103.1	1.2	90.5	Revenue Above Expectations & PAT Below Expectations
<b>Endurance Technologies</b>	3318.2	226.4	17.4	11.0	12.0	-7.7	Marginally below expectations
<b>HG Infra</b>	1709.0	125.4	13.5	-10.0	8.8	-32.0	In Line with expectations
<b>Muthoot Finance</b>	3473.2	2046.3	50.7	89.7	19.6	35.7	Above expectations
<b>PNC Infra</b>	1136.0	80.7	-35.0	-81.0	-16.5	473.0	Below Expectations

### DURING MARKET HOURS

COMPANY	Q1FY26		YOY (%)		QOQ (%)		
<b>Samvardhan Motherson</b>	30212.0	511.8	4.7	-48.5	3.1	-51.3	Below expectations



## Open Derivatives Trading Calls

NO	RECO DT	RECO	COMPANY NAME	BUY RANGE	CMP	SL	TARGET	UPSIDE %	VALID TILL
1	12-AUG-25	BUY	BANK NIFTY AUG FUT	55570-55350	55,422.20	55250	56000	1.0	15-AUG-25
2	13-AUG-25	SELL	NIFTY AUG FUT	24730-24770	24,718.90	24800	24600	0.5	18-AUG-25
3	13-AUG-25	BUY	BANK NIFTY 28TH AUG 55200 CALL OPTION	614.4	626.30	432	927	48.0	18-AUG-25
4	5-AUG-25	SELL	SUN PHARMA SEPT FUT	1648-1700	1,652.40	1740	1510	8.6	25-SEP-25
5	11-AUG-25	BUY	BANK OF BARODA AUG FUT	245-239	242.92	235	258	6.2	25-AUG-25
6	12-AUG-25	BUY	TATA STEEL AUG FUT	160.35-158	161.10	156.5	169	4.9	26-AUG-25
7	13-AUG-25	BUY	EICHER MOTORS AUG FUT	5731-5587	5,736.00	5530	6015	4.9	27-AUG-25
8	13-AUG-25	SELL	OIL INDIA SEP FUT	405.45-424	406.60	435	370	9.0	25-SEP-25

## Open Short-Term MTF Calls

NO.	RECO DT.	RECO	COMPANY NAME	BUY RANGE	CMP	Lower Band	SL	TARGET	UPSIDE %	VALID TILL
1	5-AUG-25	BUY	D MART	4262-4285	4,334.6	4179	4109	4480	3.4	26-AUG-25
2	7-AUG-25	BUY	GRAVITA INDIA	1811-1825	1,788.5	1773	1745	1903	6.4	21-AUG-25
3	11-AUG-25	BUY	POLICY BAZAR	1855-1841	1,852.0	1785	1749	1970	6.4	25-AUG-25
4	11-AUG-25	BUY	ANANDRATHI	2677-2705	2,767.9	2624	2579	2822	2.0	25-AUG-25
5	11-AUG-25	BUY	MOTILAL OSWAL	917-926	928.9	892	878	965	3.9	25-AUG-25
6	12-AUG-25	BUY	EPL LTD	233.50-231.05	229.1	224	219.5	247	7.8	26-AUG-25
7	12-AUG-25	BUY	ZENSAR TECH	807-813	801.2	783	770	852	6.3	26-AUG-25

## Open Positional MTF Calls

NO.	RECO DT.	RECO	COMPANY NAME	BUY RANGE	CMP	SL	TARGET 1	TARGET 2	UPSIDE %	VALID TILL
1	26-MAY-25	BUY	CONSUMEETF	118.81-115.80	122.5	114.0	124.5	127.0	4	24-AUG-25
2	2-JUN-25	BUY	INDIAN BANK*	617.05-595.75	670.7	617.1	663.8	688.8	3	29-AUG-25
3	9-JUN-25	BUY	JSW INFRA	310-287	299.8	279.0	335.0	350.0	17	21-AUG-25
4	9-JUN-25	BUY	AUTOIETF	24.45-23.79	24.8	23.5	25.1	25.7	4	7-SEP-25
5	13-AUG-25	BUY	CAPLIN POINTS	2145-2112	2,156.9	1950.0	2320.0	2490	15	12-OCT-25
6	13-AUG-25	BUY	UNO MINDA	1113-1125	1,114.4	1045.0	1195.0	1240	11	27-SEP-25

\*= 1st Target Achieved

## NSE 200 SUPPORT & RESISTANCE

SYMBOL	CLOSE	R2	R1	PIVOT	S1	S2	5 DMA	20 DMA	% Delivery	Trend
ABB	5087.0	5139.3	5113.2	5075.8	5049.7	5012.3	5069.2	5406.2	53.8	Bearish
ABCAPITAL	269.7	276.1	272.9	270.1	266.9	264.1	271.8	266.6	42.1	Bullish
ABFRL	74.7	76.2	75.4	74.7	74.0	73.3	74.7	74.9	32.9	Bearish
ACC	1786.3	1812.4	1799.3	1790.0	1776.9	1767.6	1793.2	1850.5	46.3	Bearish
AMBUJACEM	580.9	596.5	588.7	581.5	573.7	566.5	585.8	602.3	62.6	Bearish
ADANIPOWER	585.6	599.3	592.4	588.0	581.1	576.7	585.4	584.5	45.3	Bullish
ADANIENSOL	786.3	801.6	794.0	788.0	780.3	774.3	790.0	821.1	39.6	Bearish
ADANIGREEN	924.2	946.3	935.2	927.4	916.3	908.4	927.0	985.1	24.8	Bearish
ADANIENT	2280.1	2349.6	2314.9	2280.1	2245.4	2210.6	2255.9	2442.5	17.3	Bearish
ADANIPORTS	1319.6	1347.9	1333.7	1325.2	1311.0	1302.5	1332.0	1382.8	44.3	Bearish
ASHOKLEY	119.7	121.9	120.8	120.0	118.9	118.1	118.9	121.8	51.4	Bearish
ALKEM	5388.5	5502.8	5445.7	5342.8	5285.7	5182.8	5003.6	4991.7	40.1	Bullish
APLAPOLLO	1582.6	1623.5	1603.0	1590.6	1570.1	1557.7	1586.1	1604.7	50.6	Bearish
APOLLOHOSP	7808.5	8130.2	7969.3	7679.2	7518.3	7228.2	7311.7	7340.1	36.5	Bearish
ASIANPAINT	2500.2	2531.8	2516.0	2488.6	2472.8	2445.4	2489.9	2420.9	59.2	Bullish
APOLLTYRE	444.7	452.2	448.4	443.2	439.5	434.3	440.1	448.1	52.9	Bearish
AUROPHARMA	1078.2	1099.4	1088.8	1073.0	1062.4	1046.6	1060.2	1104.7	34.6	Bearish
ASTRAL	1292.1	1315.8	1304.0	1288.1	1276.3	1260.4	1346.9	1422.9	49.5	Bearish
ATGL	609.3	622.0	615.6	609.8	603.5	597.7	598.8	620.3	29.0	Bearish
AUBANK	738.0	750.0	744.0	736.5	730.5	722.9	735.9	744.6	52.2	Bearish
AXISBANK	1066.0	1076.9	1071.5	1067.3	1061.9	1057.7	1068.7	1081.9	66.8	Bearish
BAJFINANCE	860.0	872.7	866.3	857.7	851.3	842.7	869.4	900.8	68.0	Bearish
BAJAJHFL	108.6	114.9	111.7	110.0	106.8	105.1	111.8	116.0	62.4	Bearish
BANDHANBNK	165.7	169.9	167.8	166.3	164.2	162.8	166.0	172.8	38.8	Bearish
BDL	1591.0	1675.5	1633.3	1567.6	1525.4	1459.7	1531.6	1618.4	18.5	Bearish
BHARTIARTL	1867.4	1884.6	1876.0	1863.9	1855.3	1843.2	1871.3	1906.9	79.6	Bearish
BHARTIHEXA	1697.6	1781.7	1739.7	1714.8	1672.8	1647.9	1740.2	1794.6	53.3	Bearish
BEL	388.9	394.8	391.8	387.0	384.0	379.2	385.1	390.6	43.9	Bearish
BHEL	224.0	229.6	226.8	224.2	221.4	218.7	223.8	239.4	28.9	Bearish
BHARATFORG	1181.5	1202.6	1192.0	1175.1	1164.5	1147.6	1159.3	1184.9	30.4	Bearish
BIOCON	360.3	366.6	363.4	358.7	355.5	350.8	353.0	380.2	34.8	Bearish
BAJAJ-AUTO	8248.5	8369.5	8309.0	8249.0	8188.5	8128.5	8234.6	8212.7	54.9	Bullish
BAJAJFINSV	1914.4	1936.2	1925.3	1909.1	1898.2	1882.0	1915.7	1968.9	40.6	Bearish
BAJAJHLDNG	13917.0	14125.0	14021.0	13917.0	13813.0	13709.0	13853.4	13920.6	41.7	Bearish
BANKBARODA	241.8	246.3	244.0	242.6	240.4	239.0	242.0	241.8	57.4	Bearish
BANKINDIA	113.6	115.5	114.5	113.7	112.7	111.8	112.6	112.8	39.6	Bearish
MAHABANK	55.1	56.5	55.8	55.4	54.7	54.2	55.1	55.9	46.9	Bearish
BOSCHLTD	38660.0	39093.3	38876.7	38693.3	38476.7	38293.3	38575.0	38925.8	42.6	Bearish
BPCL	322.5	328.5	325.5	323.3	320.3	318.0	319.4	329.5	46.5	Bearish
BRITANNIA	5375.5	5449.8	5412.7	5355.8	5318.7	5261.8	5391.7	5613.5	71.3	Bearish
BSE	2496.4	2580.1	2538.2	2460.1	2418.2	2340.1	2419.3	2456.2	42.7	Bearish
CANBK	109.0	111.3	110.1	109.3	108.2	107.4	108.9	109.6	36.6	Bearish
CONCOR	541.6	549.3	545.4	541.2	537.3	533.1	547.7	582.2	49.8	Bearish
CGPOWER	670.5	683.8	677.1	668.2	661.5	652.6	668.4	670.2	42.3	Bearish
CHOLAFIN	1460.5	1483.4	1471.9	1463.3	1451.8	1443.2	1466.7	1496.0	52.3	Bearish
CIPLA	1561.0	1597.1	1579.1	1549.7	1531.7	1502.3	1512.8	1511.3	48.3	Bullish
COLPAL	2171.7	2232.6	2202.1	2179.6	2149.1	2126.6	2206.7	2262.2	63.5	Bearish
COALINDIA	386.1	389.3	387.7	386.4	384.8	383.5	382.6	382.1	58.4	Bullish
COCHINSHIP	1683.1	1749.6	1716.4	1690.7	1657.5	1631.8	1668.8	1767.6	27.6	Bearish
COFORGE	1621.7	1655.9	1638.8	1623.0	1605.9	1590.1	1634.4	1729.2	52.2	Bearish

## NSE 200 SUPPORT & RESISTANCE

SYMBOL	CLOSE	R2	R1	PIVOT	S1	S2	5 DMA	20 DMA	% Delivery	Trend
DABUR	503.5	508.7	506.1	502.4	499.8	496.1	508.2	517.7	63.9	Bearish
DIVISLAB	6100.5	6253.5	6177.0	6073.5	5997.0	5893.5	6019.9	6435.5	64.9	Bearish
DIXON	15952.0	16348.7	16150.3	15871.7	15673.3	15394.7	16079.0	16461.3	24.8	Bearish
DLF	757.7	773.1	765.4	759.5	751.7	745.8	757.4	797.5	37.9	Bearish
DMART	4334.6	4400.0	4367.3	4307.3	4274.6	4214.6	4241.0	4141.0	57.0	Bullish
DRREDDY	1253.4	1278.6	1266.0	1242.9	1230.3	1207.2	1221.1	1246.1	65.1	Bearish
EICHERMOT	5714.5	5815.8	5765.2	5706.8	5656.2	5597.8	5677.7	5565.6	56.0	Bullish
ESCORTS	3374.5	3410.2	3392.4	3376.6	3358.8	3343.0	3365.3	3401.4	47.8	Bearish
ETERNAL	312.4	319.1	315.7	310.6	307.3	302.2	306.1	299.0	55.8	Bullish
EXIDEIND	375.7	379.6	377.7	376.4	374.4	373.1	377.1	384.3	61.5	Bearish
FEDERALBNK	196.2	199.0	197.6	196.5	195.1	194.1	196.8	203.6	74.3	Bearish
GAIL	173.4	175.9	174.6	173.5	172.2	171.0	172.3	178.5	57.5	Bearish
GODREJCP	1198.8	1218.1	1208.4	1196.9	1187.2	1175.7	1201.1	1226.5	67.8	Bearish
GMRAIRPORT	88.7	90.0	89.3	88.6	87.9	87.2	89.2	90.9	81.1	Bearish
GLENMARK	2029.3	2086.8	2058.1	2040.5	2011.8	1994.2	2043.8	2112.7	53.0	Bearish
GODREJPROP	1960.1	1991.5	1975.8	1962.2	1946.5	1932.9	1983.1	2154.2	63.6	Bearish
GRASIM	2745.9	2786.3	2766.1	2745.8	2725.6	2705.3	2736.1	2742.1	55.6	Bearish
HAVELLS	1465.9	1485.8	1475.9	1467.4	1457.5	1449.0	1478.2	1511.5	67.2	Bearish
HCLTECH	1501.1	1517.7	1509.4	1499.2	1490.9	1480.7	1487.9	1493.3	70.1	Bearish
HDFCAMC	5481.5	5538.5	5510.0	5491.5	5463.0	5444.5	5535.0	5593.4	70.9	Bearish
HDFCBANK	1980.3	2006.0	1993.2	1981.1	1968.3	1956.2	1983.0	1996.1	62.6	Bearish
HDFCLIFE	776.6	794.7	785.7	774.6	765.6	754.5	765.0	755.8	49.2	Bullish
HEROMOTOCO	4768.7	4880.8	4824.7	4737.5	4681.4	4594.2	4647.3	4436.1	46.9	Bullish
HAL	4524.4	4649.6	4587.0	4506.0	4443.4	4362.4	4474.0	4572.3	51.2	Bearish
HINDALCO	700.5	726.1	713.3	692.1	679.3	658.1	680.0	684.7	36.1	Bearish
HINDPETRO	411.1	417.0	414.0	410.4	407.4	403.8	408.3	418.6	50.1	Bearish
HUDCO	210.3	215.9	213.1	211.4	208.6	207.0	209.9	217.4	32.2	Bearish
HINDUNILVR	2495.1	2518.1	2506.6	2490.0	2478.5	2461.9	2502.7	2489.1	66.4	Bullish
HYUNDAI	2246.7	2302.2	2274.5	2232.2	2204.5	2162.2	2172.8	2139.8	60.8	Bullish
HINDZINC	430.2	438.6	434.4	429.5	425.3	420.3	423.3	430.7	41.9	Bearish
ICICIBANK	1420.8	1433.7	1427.3	1421.2	1414.8	1408.7	1431.1	1457.5	68.0	Bearish
ICICIGI	1912.7	1936.0	1924.3	1912.7	1901.0	1889.4	1903.1	1913.5	70.7	Bearish
IDEA	6.4	6.6	6.5	6.4	6.3	6.2	6.5	7.0	34.7	Bearish
IDFCFIRSTB	69.9	71.0	70.5	69.8	69.2	68.6	69.4	70.5	56.3	Bearish
IGL	206.3	211.3	208.8	206.7	204.2	202.1	204.5	206.9	48.8	Bearish
INDHOTEL	769.8	785.0	777.4	763.7	756.1	742.4	748.4	750.6	54.9	Bearish
INDUSINDBK	773.5	797.1	785.3	776.0	764.2	754.9	785.9	815.5	41.0	Bearish
INDIANB	670.7	680.7	675.7	671.0	666.0	661.3	662.9	639.3	56.2	Bullish
INDIGO	5969.5	6056.5	6013.0	5949.5	5906.0	5842.5	5880.8	5842.2	55.5	Bullish
INDUSTOWER	337.3	345.9	341.6	339.0	334.7	332.0	336.3	369.4	67.8	Bearish
INFY	1426.6	1439.3	1432.9	1427.7	1421.3	1416.1	1427.8	1500.6	76.4	Bearish
NAUKRI	1325.9	1342.0	1334.0	1323.2	1315.2	1304.4	1332.3	1382.1	76.1	Bearish
IOC	142.4	144.2	143.3	142.5	141.6	140.8	141.6	146.0	49.2	Bearish
ICICIPRULI	621.3	634.7	628.0	622.6	615.9	610.4	615.3	619.8	57.0	Bearish
IRB	44.8	45.5	45.1	44.7	44.3	43.8	44.4	46.0	51.7	Bearish
IRCTC	727.4	735.5	731.4	725.7	721.6	715.9	723.5	739.3	35.8	Bearish
IREDA	144.2	145.9	145.1	144.2	143.3	142.4	143.9	150.0	39.0	Bearish
IRFC	125.7	127.5	126.6	125.7	124.8	124.0	126.0	130.1	34.8	Bearish
ITC	414.1	419.0	416.5	415.1	412.6	411.2	415.1	414.5	72.4	Bearish
JIOFIN	330.6	334.6	332.6	330.6	328.6	326.6	326.4	321.9	43.2	Bullish

## NSE 200 SUPPORT & RESISTANCE

SYMBOL	CLOSE	R2	R1	PIVOT	S1	S2	5 DMA	20 DMA	% Delivery	Trend
JINDALSTEL	996.4	1035.8	1016.1	1002.0	982.3	968.3	991.9	979.6	38.1	Bullish
JSWSTEEL	1053.7	1063.8	1058.8	1054.5	1049.5	1045.2	1053.7	1041.8	54.6	Bullish
JSWENERGY	535.0	541.0	538.0	535.9	532.9	530.8	530.9	528.6	42.8	Bullish
JUBLFOOD	639.8	651.0	645.4	638.4	632.8	625.8	632.6	650.6	38.3	Bearish
KALYANKJIL	515.7	534.6	525.1	519.6	510.1	504.6	539.0	583.0	34.1	Bearish
CUMMINSIND	3792.1	3855.4	3823.7	3792.4	3760.7	3729.4	3765.0	3621.6	56.9	Bullish
KOTAKBANK	1987.7	2016.2	2001.9	1982.1	1967.8	1948.0	1973.5	2040.7	72.5	Bearish
KPITTECH	1216.0	1236.5	1226.3	1216.6	1206.4	1196.7	1207.0	1230.7	41.4	Bearish
LICHSGFIN	574.4	579.9	577.1	574.2	571.5	568.6	574.2	595.2	61.4	Bearish
LICI	887.5	936.3	911.9	896.6	872.2	856.8	901.7	904.2	34.7	Bearish
LODHA	1225.8	1240.1	1232.9	1223.6	1216.4	1207.1	1218.0	1281.9	63.7	Bearish
LUPIN	1989.8	2041.8	2015.8	1979.8	1953.8	1917.8	1948.1	1929.5	54.7	Bullish
LT	3693.7	3731.7	3712.7	3697.0	3678.0	3662.3	3659.5	3566.4	64.0	Bullish
LTF	201.3	205.0	203.2	200.8	198.9	196.5	198.6	203.5	34.9	Bearish
LTIM	5114.5	5177.2	5145.8	5100.7	5069.3	5024.2	5067.5	5110.4	61.2	Bearish
MANKIND	2466.0	2509.1	2487.6	2462.2	2440.7	2415.3	2467.8	2567.4	65.5	Bearish
MFSL	1588.0	1613.9	1601.0	1587.0	1574.1	1560.1	1557.8	1526.7	41.2	Bullish
MAXHEALTH	1267.1	1323.7	1295.4	1273.4	1245.1	1223.1	1260.4	1254.3	40.8	Bullish
MAZADOCK	2748.8	2806.8	2777.8	2741.0	2712.0	2675.2	2711.7	2818.5	26.3	Bearish
M&M	3282.2	3334.9	3308.6	3273.6	3247.3	3212.3	3212.0	3217.4	62.3	Bearish
M&MFIN	258.9	264.0	261.4	258.4	255.8	252.8	255.4	257.1	64.5	Bearish
MOTILALOFS	928.9	949.7	939.3	927.6	917.2	905.5	916.4	919.0	44.4	Bearish
MOTHERSON	93.4	97.3	95.4	92.6	90.6	87.9	92.0	97.5	22.7	Bearish
MPHASIS	2695.2	2759.2	2727.2	2709.4	2677.4	2659.6	2696.8	2734.7	58.6	Bearish
MARICO	710.2	718.6	714.4	706.8	702.6	695.1	708.8	711.4	72.2	Bearish
MRF	138840.0	143146.7	140993.3	139546.7	137393.3	135946.7	141705.0	146557.5	36.9	Bearish
MARUTI	12834.0	13010.0	12922.0	12837.0	12749.0	12664.0	12698.6	12531.8	56.4	Bullish
MUTHOOTFIN	2509.9	2585.4	2547.7	2512.1	2474.4	2438.8	2577.1	2630.5	39.2	Bearish
NATIONALUM	189.9	194.0	192.0	189.7	187.7	185.5	188.1	189.7	40.6	Bearish
NESTLEIND	1096.9	1109.0	1102.9	1094.8	1088.7	1080.6	1101.4	1147.2	54.2	Bearish
NHPC	85.1	87.0	86.0	84.9	84.0	82.9	83.5	84.7	34.1	Bearish
NMDC	72.6	74.1	73.3	72.2	71.5	70.4	71.3	71.5	49.4	Bearish
NTPC	340.0	344.6	342.3	340.7	338.4	336.9	336.1	336.6	63.4	Bearish
NTPCGREEN	100.6	104.6	102.6	101.5	99.5	98.4	102.0	105.7	64.8	Bearish
NYKAA	215.0	226.0	220.5	215.3	209.8	204.5	207.1	211.6	25.0	Bearish
OBEROIRLTY	1626.7	1652.9	1639.8	1627.9	1614.8	1602.9	1606.6	1678.3	46.3	Bearish
OFSS	8594.5	8710.5	8652.5	8559.0	8501.0	8407.5	8501.4	8616.4	38.0	Bearish
OIL	407.0	438.5	422.8	411.9	396.1	385.2	424.0	436.7	38.2	Bearish
OLAELEC	40.5	43.2	41.8	40.9	39.5	38.6	40.1	41.0	26.5	Bearish
ONGC	238.7	242.0	240.3	238.3	236.7	234.7	235.1	239.6	47.1	Bearish
PAGEIND	43525.0	44611.7	44068.3	43736.7	43193.3	42861.7	44651.0	46352.5	73.9	Bearish
PATANJALI	1797.5	1848.0	1822.7	1804.8	1779.5	1761.6	1805.0	1868.8	30.5	Bearish
PAYTM	1155.0	1201.0	1178.0	1164.0	1141.0	1127.0	1104.9	1071.4	32.9	Bullish
PRESTIGE	1628.9	1658.2	1643.5	1631.2	1616.5	1604.2	1629.1	1668.8	50.8	Bearish
PHOENIXLTD	1436.9	1478.0	1457.5	1444.2	1423.7	1410.4	1437.5	1471.2	61.5	Bearish
PIIND	3772.7	3926.9	3849.8	3801.9	3724.8	3676.9	3881.4	4082.9	52.9	Bearish
PIDILITIND	3061.9	3123.8	3092.8	3074.0	3043.0	3024.2	3070.5	2957.1	60.5	Bullish
PETRONET	275.0	282.5	278.7	276.5	272.7	270.5	275.8	290.2	68.7	Bearish
PNB	106.6	107.9	107.3	106.7	106.1	105.5	105.7	107.6	46.9	Bearish
POLICYBZR	1852.0	1919.7	1885.8	1855.7	1821.8	1791.7	1816.7	1795.2	48.5	Bullish

## NSE 200 SUPPORT & RESISTANCE

SYMBOL	CLOSE	R2	R1	PIVOT	S1	S2	5 DMA	20 DMA	% Delivery	Trend
POLYCAB	6966.0	7082.7	7024.3	6922.2	6863.8	6761.7	6829.8	6867.2	46.7	Bearish
PFC	417.8	422.0	419.9	417.6	415.5	413.2	413.2	414.3	62.7	Bearish
PREMIERENE	999.1	1038.8	1018.9	1004.0	984.1	969.2	999.1	1037.9	36.5	Bearish
PERSISTENT	5247.5	5317.8	5282.7	5242.3	5207.2	5166.8	5187.8	5276.5	49.6	Bearish
POWERGRID	288.2	291.2	289.7	287.9	286.4	284.5	285.6	291.0	73.1	Bearish
RECLTD	387.2	390.4	388.8	387.1	385.5	383.9	385.2	394.0	47.5	Bearish
RELIANCE	1382.6	1398.3	1390.4	1384.0	1376.1	1369.7	1381.3	1405.7	65.7	Bearish
RVNL	326.3	342.9	334.6	325.6	317.3	308.2	336.3	356.1	21.2	Bearish
SAIL	124.1	126.1	125.1	123.6	122.6	121.1	122.5	127.6	37.1	Bearish
SBICARD	790.1	803.4	796.8	790.5	783.9	777.6	792.3	835.8	41.2	Bearish
SBILIFE	1840.3	1866.8	1853.5	1845.8	1832.5	1824.8	1844.8	1828.3	68.5	Bullish
SBIN	821.9	826.8	824.3	822.5	820.0	818.2	815.1	810.0	59.8	Bullish
SHRIRAMFIN	619.3	628.0	623.6	617.0	612.6	606.0	617.2	631.6	65.2	Bearish
SUPREMEIND	4300.0	4406.7	4353.3	4286.7	4233.3	4166.7	4240.4	4243.0	71.5	Bearish
SIEMENS	3150.7	3238.1	3194.4	3148.3	3104.6	3058.5	3109.9	3090.6	25.1	Bullish
SJVN	93.5	101.0	97.2	95.2	91.4	89.4	94.0	95.5	30.4	Bearish
SOLARINDS	15039.0	15402.3	15220.7	14950.3	14768.7	14498.3	14776.0	14680.7	37.3	Bullish
SONACOMS	448.8	455.6	452.2	447.1	443.7	438.6	445.8	461.3	63.9	Bearish
SHREECEM	30410.0	30950.0	30680.0	30465.0	30195.0	29980.0	30506.0	30872.8	80.7	Bearish
SRF	2855.2	2904.6	2879.9	2862.6	2837.9	2820.6	2869.3	3036.4	52.5	Bearish
SUZLON	60.4	65.1	62.8	61.4	59.1	57.7	62.8	64.0	41.0	Bearish
SUNPHARMA	1639.8	1659.7	1649.8	1633.5	1623.6	1607.3	1611.1	1662.4	61.0	Bearish
SWIGGY	400.4	411.1	405.7	400.4	395.1	389.8	395.5	400.3	41.8	Bearish
TATASTEEL	160.2	163.3	161.8	160.8	159.3	158.3	159.3	160.2	46.6	Bearish
TATACONSUM	1056.1	1068.2	1062.1	1052.7	1046.6	1037.2	1053.2	1068.0	51.7	Bearish
TATATECH	666.8	675.3	671.0	665.4	661.1	655.5	662.7	694.4	43.6	Bearish
TATACOMM	1639.8	1661.3	1650.5	1634.8	1624.0	1608.3	1651.7	1705.9	60.6	Bearish
TCS	3036.2	3052.2	3044.2	3036.4	3028.4	3020.6	3039.2	3088.7	68.8	Bearish
TECHM	1506.3	1527.5	1516.9	1508.1	1497.5	1488.7	1491.8	1493.0	70.5	Bearish
TATAELXSI	5671.0	5813.3	5742.2	5661.8	5590.7	5510.3	5717.9	6003.4	23.0	Bearish
TIINDIA	3057.2	3100.4	3078.8	3050.3	3028.7	3000.2	2981.6	2919.7	56.7	Bullish
TORNTPOWER	1362.1	1388.7	1375.4	1362.7	1349.4	1336.7	1351.7	1340.3	45.9	Bullish
TATAPOWER	387.2	391.4	389.3	386.9	384.8	382.3	384.1	394.3	44.0	Bearish
TRENT	5398.5	5486.2	5442.3	5401.2	5357.3	5316.2	5365.6	5253.7	51.5	Bullish
TORNTPHARM	3617.8	3673.0	3645.4	3624.7	3597.1	3576.4	3605.7	3601.4	71.3	Bullish
TITAN	3466.8	3506.7	3486.7	3475.0	3455.0	3443.3	3459.5	3423.1	46.0	Bullish
TATAMOTORS	663.8	672.8	668.3	662.5	657.9	652.1	650.4	668.6	40.7	Bearish
TVSMOTOR	3019.2	3090.3	3054.7	3009.3	2973.7	2928.3	2989.3	2880.6	57.2	Bullish
UNIONBANK	135.7	137.9	136.8	135.8	134.7	133.7	133.9	135.8	46.6	Bearish
UNITDSPR	1306.2	1317.7	1312.0	1303.2	1297.5	1288.7	1297.5	1325.9	42.5	Bearish
UPL	686.2	699.0	692.6	686.7	680.3	674.5	692.5	707.0	62.9	Bearish
ULTRACEMCO	12401.0	12564.3	12482.7	12435.3	12353.7	12306.3	12337.0	12325.3	78.6	Bullish
VBL	511.1	523.7	517.4	513.7	507.4	503.8	507.0	500.3	70.8	Bullish
VEDL	438.8	449.9	444.3	439.7	434.1	429.5	434.3	439.5	44.5	Bearish
VMM	144.2	147.1	145.7	143.4	142.0	139.7	142.0	140.5	54.5	Bullish
VOLTAS	1276.1	1308.2	1292.2	1267.9	1251.9	1227.6	1276.1	1326.4	50.1	Bearish
WAAREEENER	2941.9	3120.1	3031.0	2976.5	2887.4	2832.9	3072.5	3119.7	48.2	Bearish
WIPRO	241.7	244.3	243.0	241.6	240.2	238.8	241.3	250.6	53.5	Bearish
YESBANK	18.8	19.0	18.9	18.8	18.7	18.6	18.7	19.3	44.6	Bearish
ZYDUSLIFE	988.6	1033.8	1011.2	974.9	952.3	915.9	956.1	965.8	39.6	Bearish

**Disclosure & Disclaimer :**

HDFC Securities Limited (HSL) is a SEBI Registered Research Analyst having registration no. INH000002475.

This report has been prepared by HDFC Securities Ltd and is solely for information of the recipient only. The report must not be used as a singular basis of any investment decision. The views herein are of a general nature and do not consider the risk appetite or the particular circumstances of an individual investor; readers are requested to take professional advice before investing. "This report may have been refined using AI tools to enhance clarity and readability."

Nothing in this document should be construed as investment advice. Each recipient of this document should make such investigations as they deem necessary to arrive at an independent evaluation of an investment in securities of the companies referred to in this document (including merits and risks) and should consult their own advisors to determine merits and risks of such investment. The information and opinions contained herein have been compiled or arrived at, based upon information obtained in good faith from sources believed to be reliable. Such information has not been independently verified and no guaranty, representation of warranty, express or implied, is made as to its accuracy, completeness or correctness. All such information and opinions are subject to change without notice. Descriptions of any company or companies or their securities mentioned herein are not intended to be complete. HSL is not obliged to update this report for such changes. HSL has the right to make changes and modifications at any time.

This report is not directed to, or intended for display, downloading, printing, reproducing or for distribution to or use by, any person or entity who is a citizen or resident or located in any locality, state, country or other jurisdiction where such distribution, publication, reproduction, availability or use would be contrary to law or regulation or what would subject HSL or its affiliates to any registration or licensing requirement within such jurisdiction.

If this report is inadvertently sent or has reached any person in such country, especially, United States of America, the same should be ignored and brought to the attention of the sender. This document may not be reproduced, distributed or published in whole or in part, directly or indirectly, for any purposes or in any manner.

Foreign currencies denominated securities, wherever mentioned, are subject to exchange rate fluctuations, which could have an adverse effect on their value or price, or the income derived from them. In addition, investors in securities such as ADRs, the values of which are influenced by foreign currencies effectively assume currency risk. It should not be considered to be taken as an offer to

sell or a solicitation to buy any security.

This document is not, and should not, be construed as an offer or solicitation of an offer, to buy or sell any securities or other financial instruments. This report should not be construed as an invitation or solicitation to do business with HSL. HSL may from time to time solicit from, or perform broking, or other services for, any company mentioned in this mail and/or its attachments.

HSL and its affiliated company(ies), their directors and employees may; (a) from time to time, have a long or short position in, and buy or sell the securities of the company(ies) mentioned herein or (b) be engaged in any other transaction involving such securities and earn brokerage or other compensation or act as a market maker in the financial instruments of the company(ies) discussed herein or act as an advisor or lender/borrower to such company(ies) or may have any other potential conflict of interests with respect to any recommendation and other related information and opinions.

HSL, its directors, analysts or employees do not take any responsibility, financial or otherwise, of the losses or the damages sustained due to the investments made or any action taken on basis of this report, including but not restricted to, fluctuation in the prices of shares and bonds, changes in the currency rates, diminution in the NAVs, reduction in the dividend or income, etc.

HSL and other group companies, its directors, associates, employees may have various positions in any of the stocks, securities and financial instruments dealt in the report, or may make sell or purchase or other deals in these securities from time to time or may deal in other securities of the companies / organizations described in this report. As regards the associates of HSL please refer the website.

HSL or its associates might have managed or co-managed public offering of securities for the subject company or might have been mandated by the subject company for any other assignment in the past twelve months.

Please note that HDFC Securities has a proprietary trading desk. This desk maintains an arm's length distance with the Research team and all its activities are segregated from Research activities. The proprietary desk operates independently, potentially leading to investment decisions that may deviate from research views.



HSL or its associates might have received any compensation from the companies mentioned in the report during the period preceding twelve months from the date of this report for services in respect of managing or co-managing public offerings, corporate finance, investment banking or merchant banking, brokerage services or other advisory service in a merger or specific transaction in the normal course of business.

HSL or its analysts did not receive any compensation or other benefits from the companies mentioned in the report or third party in connection with preparation of the research report. Accordingly, neither HSL nor Research Analysts have any material conflict of interest at the time of publication of this report. Compensation of our Research Analysts is not based on any specific merchant banking, investment banking or brokerage service transactions. HSL may have issued other reports that are inconsistent with and reach different conclusion from the information presented in this report.

Research entity has not been engaged in market making activity for the subject company. Research analyst has not served as an officer, director or employee of the subject company. We have not received any compensation/benefits from the subject company or third party in connection with the Research Report.

HDFC securities Limited, I Think Techno Campus, Building - B, "Alpha", Office Floor 8, Near Kanjurmarg Station, Opp. Crompton Greaves, Kanjurmarg (East), Mumbai 400 042 Phone: (022) 3075 3400 Fax: (022) 2496 5066

Compliance Officer: Murli V Karkera Email: [complianceofficer@hdfcsec.com](mailto:complianceofficer@hdfcsec.com) Phone: (022) 3045 3600

For grievance redressal contact Customer Care Team Email: [customercare@hdfcsec.com](mailto:customercare@hdfcsec.com) Phone: (022) 3901 9400

HDFC Securities Limited, SEBI Reg. No.: NSE, BSE, MSEI, MCX: INZ000186937; AMFI Reg. No. ARN: 13549; PFRDA Reg. No. POP: 11092018; IRDA Corporate Agent License No.: CA0062; SEBI Research Analyst Reg. No.: INH000002475; SEBI Investment Adviser Reg. No.: INA000011538; CIN - U67120MH2000PLC152193

Investment in securities market are subject to market risks. Read all the related documents carefully before investing.

Mutual Funds Investments are subject to market risk. Please read the offer and scheme related documents carefully before investing.

Registration granted by SEBI, membership of BASL (in case of IAs) and certification from NISM in no way guarantee performance of the intermediary or provide any assurance of returns to investors.